

Source:	Prestolite Electric Ltd - Greenford, London, UK
Date:	February 24, 2012
Bulletin No:	TSB4044
Models:	8SC Series Alternators
Subject:	Pulley fitting instructions

Purpose of instructions:

A guide to correctly install a pulley onto the 8SC Series of alternators.

Tools required:

Torque wrench (100 ft lbs / 135 N.m)

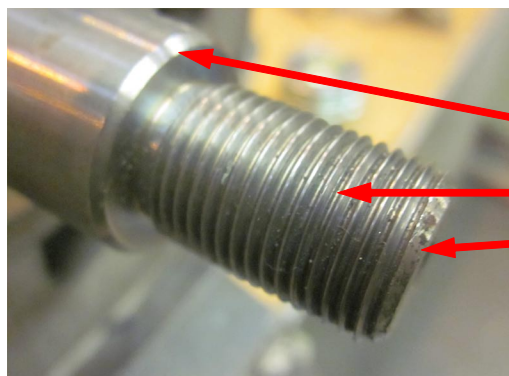
Pneumatic / Electric impact wrench

24mm Socket (1/2" drive or to suit impact wrench)

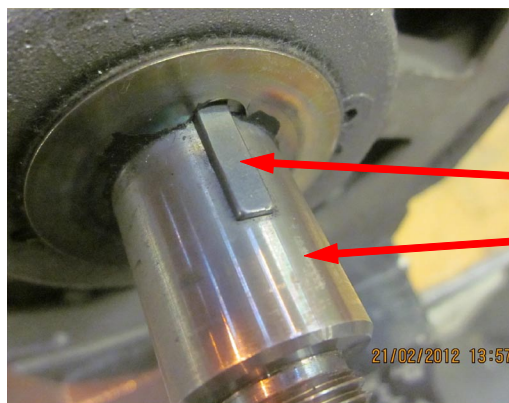
36mm Open ended spanner (or adjustable wrench)

Installation instructions:

1. Check the alternator to ensure shaft threads, key way and key are free from damage.



No damage to thread,
and leading edges.



Key is properly seated.
Shaft and key is free of damage.

Important: The information contained in this bulletin is intended for use by trained, professional technicians who have the proper tools, equipment, and training to perform the required maintenance described above. This information is NOT intended for 'do-it-yourselfers', and you should not assume that this information applies to your equipment. If you have any questions regarding this information please visit our website at www.prestolite.com, or contact our technical service department at:

Date:	February 24, 2012
Bulletin No:	TSB4044

Installation instructions (continued):

2. Fit the cooling fan. Ensure you use the correct cooling fan depending on the application.
Fitting the incorrect fan could lead to early life alternator failure.



Clockwise rotation fan is used for applications where alternator operated in clockwise direction (viewed from front end / pulley end of alternator).



The clockwise fan will have curved vanes



Bi-directional fan is used for applications with alternators required to operate incounter clockwise direction (viewed from front end / pulley end of alternator).



Bi-directional fans will have straight vanes



Important: The information contained in this bulletin is intended for use by trained, professional technicians who have the proper tools, equipment, and training to perform the required maintenance described above. This information is NOT intended for 'do-it-yourselfers', and you should not assume that this information applies to your equipment. If you have any questions regarding this information please visit our website at www.prestolite.com, or contact our technical service department at:

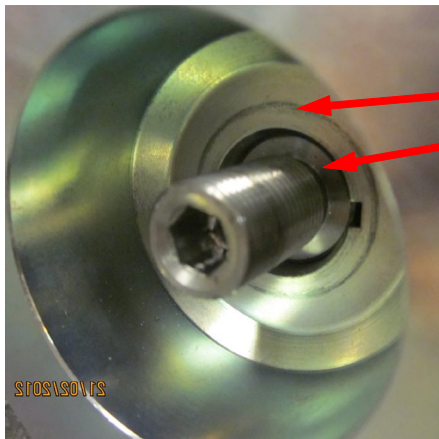
Date:	February 24, 2012
Bulletin No:	TSB4044

Installation instructions (continued):

3. Fit the pulley.

This should be a good fit and only require pushing the pulley on by hand, no force should be required.

Slide the pulley on the shaft until it is in contact with the fan.



With the pulley in position the shoulder of the shaft should be below the inner face of the pulley.

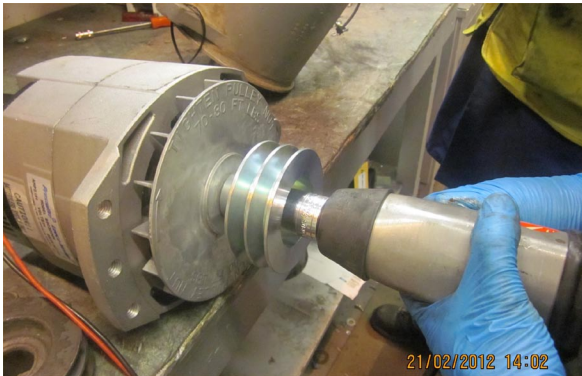
This ensures that pressure is applied to the pulley and it is held firm when the shaft nut is tightened.

Important: The information contained in this bulletin is intended for use by trained, professional technicians who have the proper tools, equipment, and training to perform the required maintenance described above. This information is NOT intended for 'do-it-yourselfers', and you should not assume that this information applies to your equipment. If you have any questions regarding this information please visit our website at www.prestolite.com, or contact our technical service department at:

Date:	February 24, 2012
Bulletin No:	TSB4044

Installation instructions (continued):

4. Use the impact wrench and 24mm socket to fasten the nut until it is in contact with the pulley.



NOTE:

The shaft nuts can only be used once.
Do not re-use old nuts, this will damage shaft thread.
Always discard old nuts and use new replacement nuts



5. Tightening the shaft nut.

Use the 36mm spanner to retain the pulley in position.



Use the torque wrench and 24mm socket and torque the shaft nut to 70-80 ft lbs (95N.m - 108N.m)



Important: The information contained in this bulletin is intended for use by trained, professional technicians who have the proper tools, equipment, and training to perform the required maintenance described above. This information is NOT intended for 'do-it-yourselfers', and you should not assume that this information applies to your equipment. If you have any questions regarding this information please visit our website at www.prestolite.com, or contact our technical service department at: